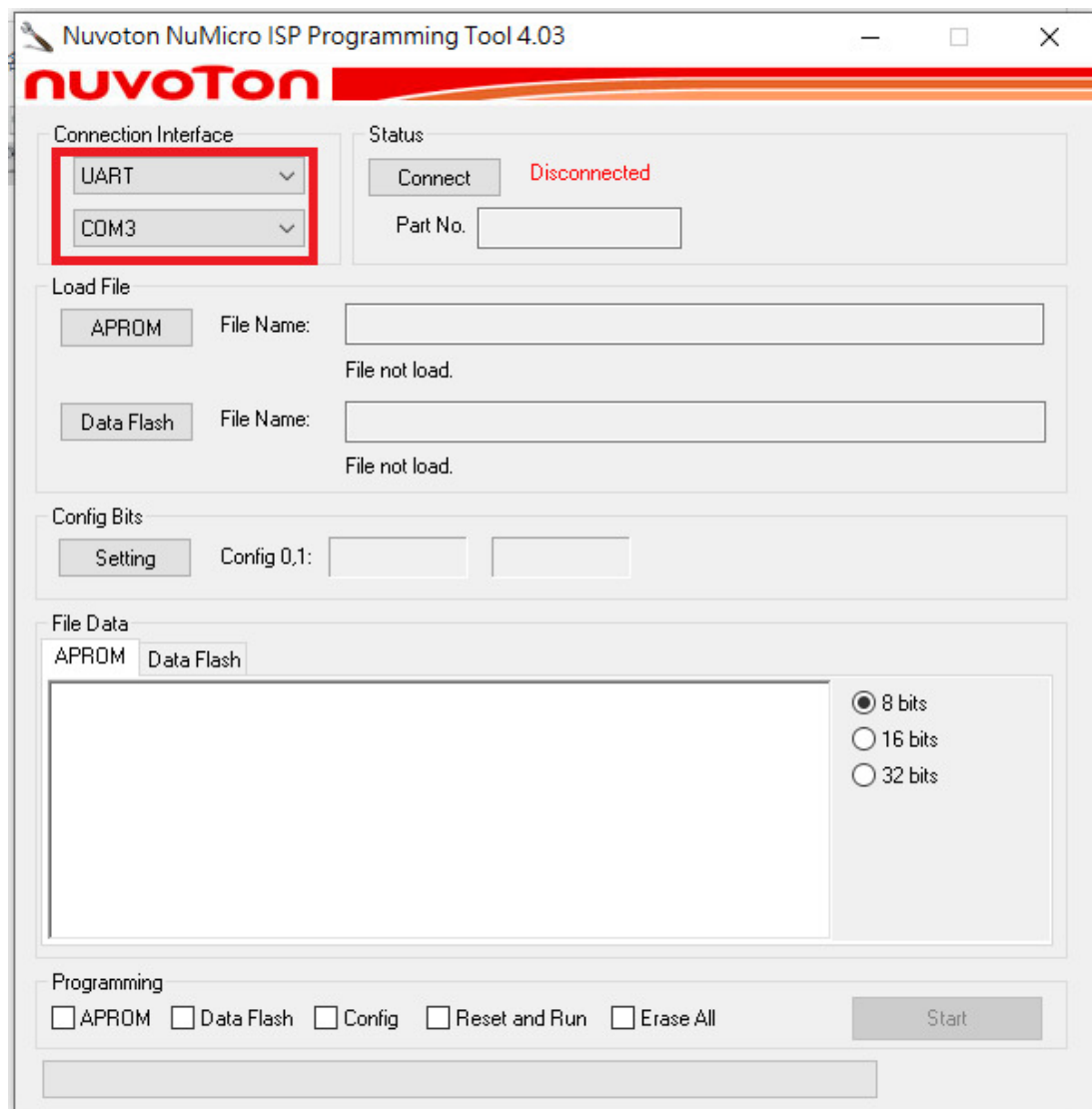


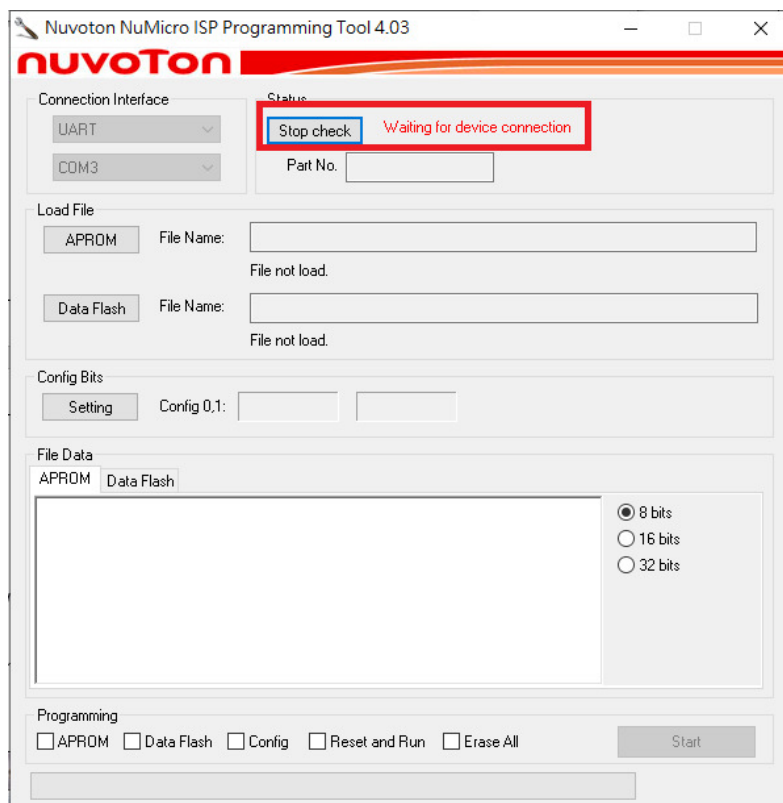
## Upgrade MCU firmware via RS232

Before upgrading, please prepare the following.

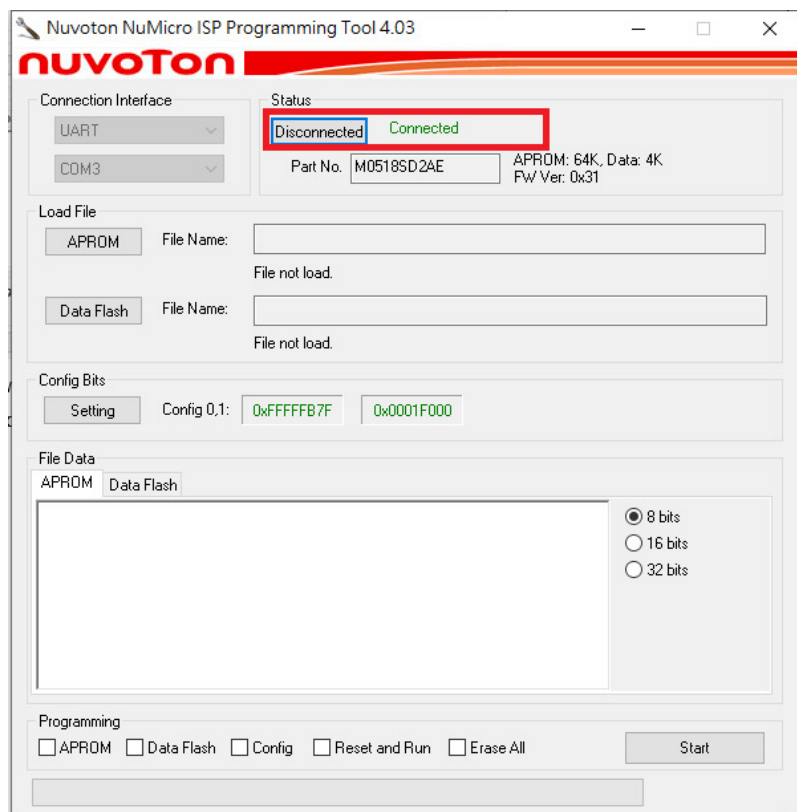
- Projector(with power cord)
  - PC(Windows 10 is better)
  - RS232 cable.
1. Connect the RS232 cable with PC and projector without power cord plugged(For laptop, user has to use USB to RS232 dongle)
  2. Open the ISP tool and select the RS232 interface and port.



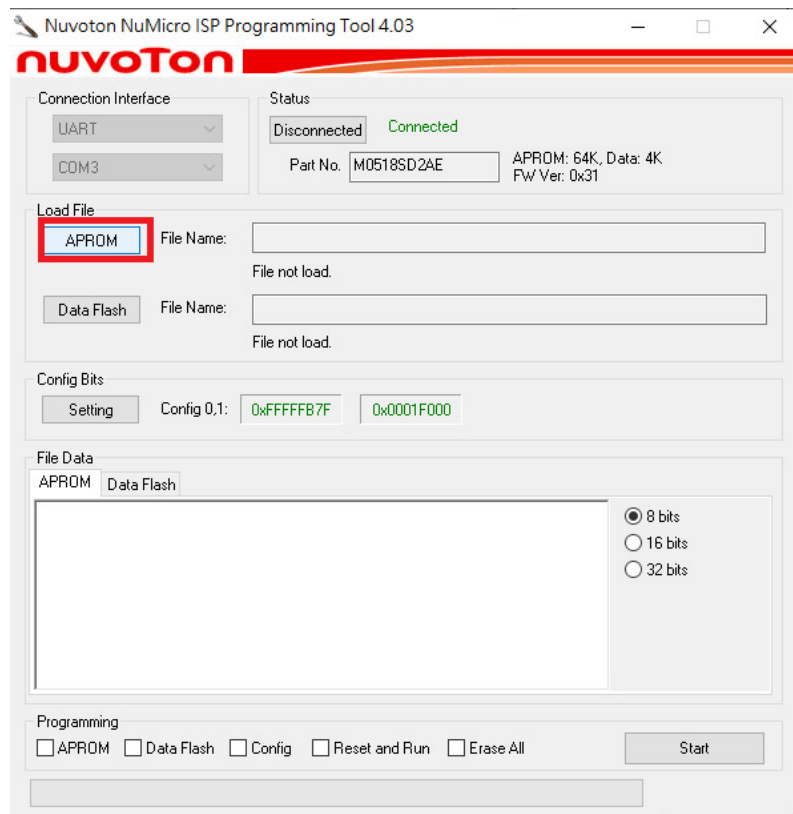
3. Press the connect button, the application will wait for projector detection



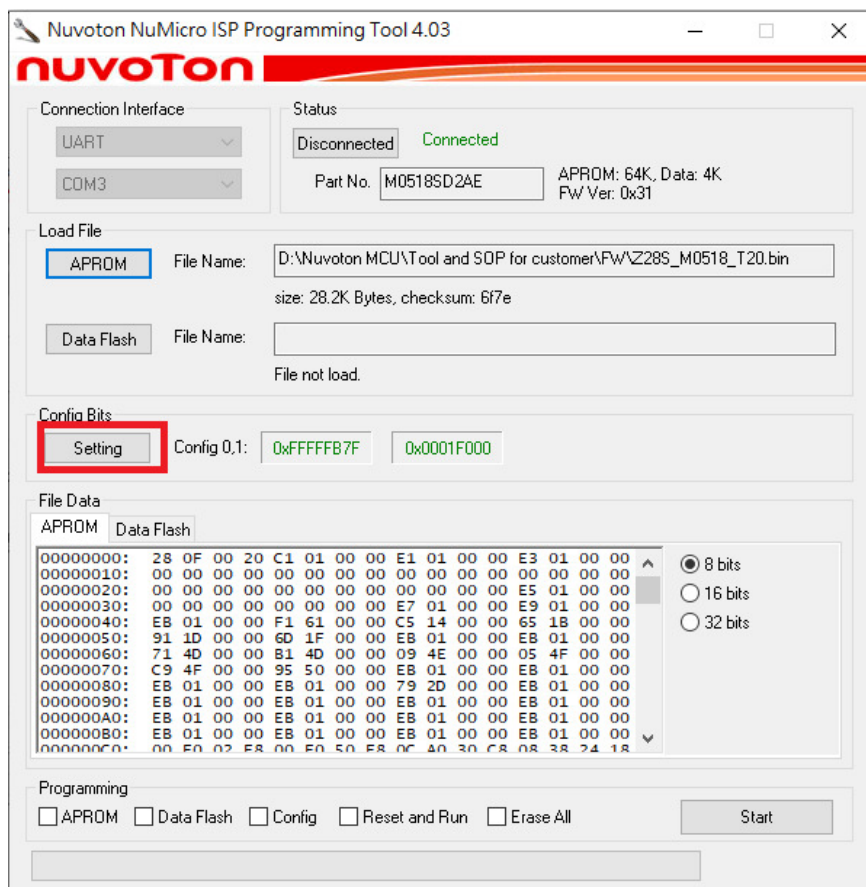
3. Plug in the power cord or apply the AC power of projector. The application will detect device and projector will enter download mode automatically.



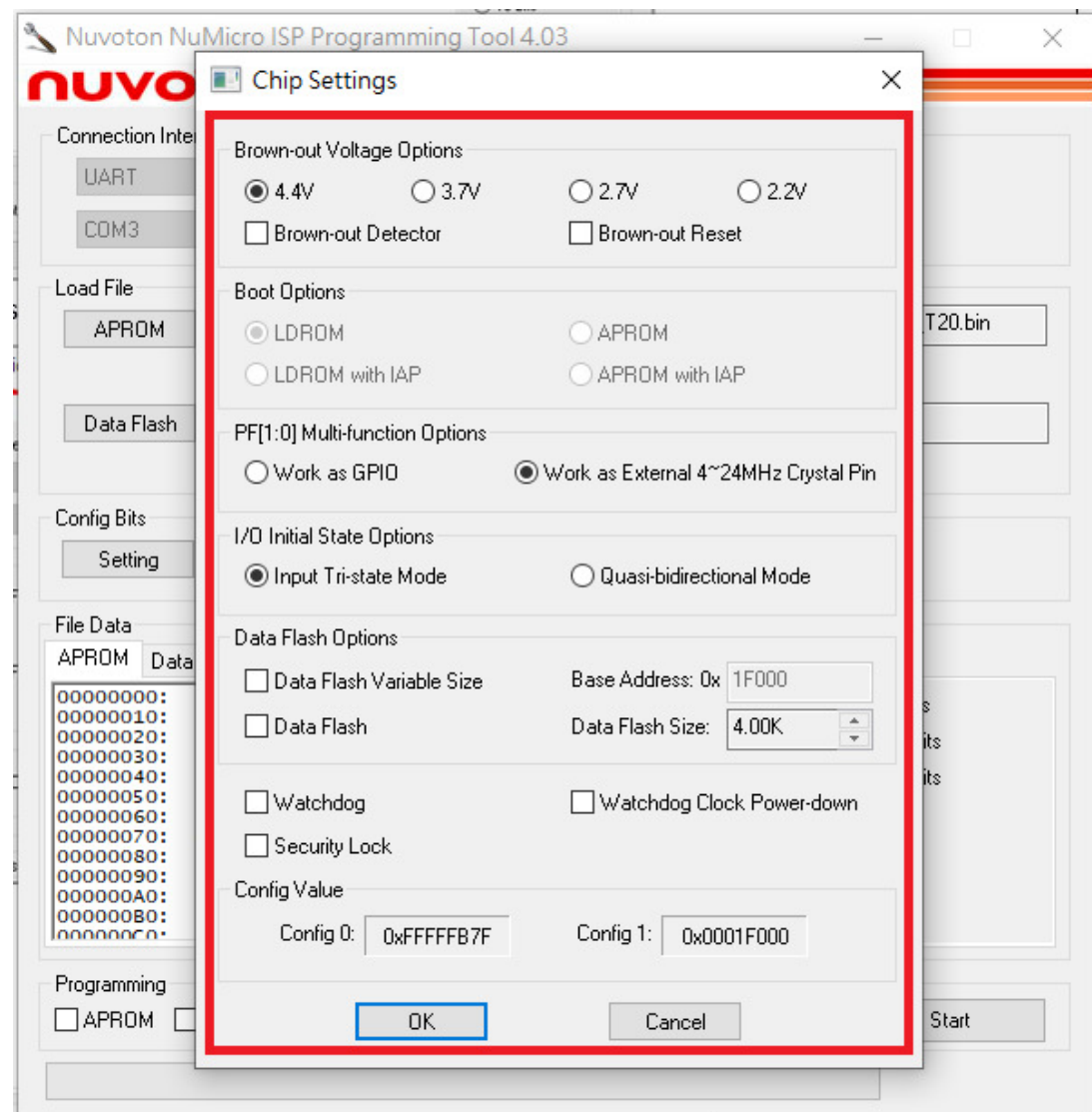
4. Select the FW file by press the “APROM” button.



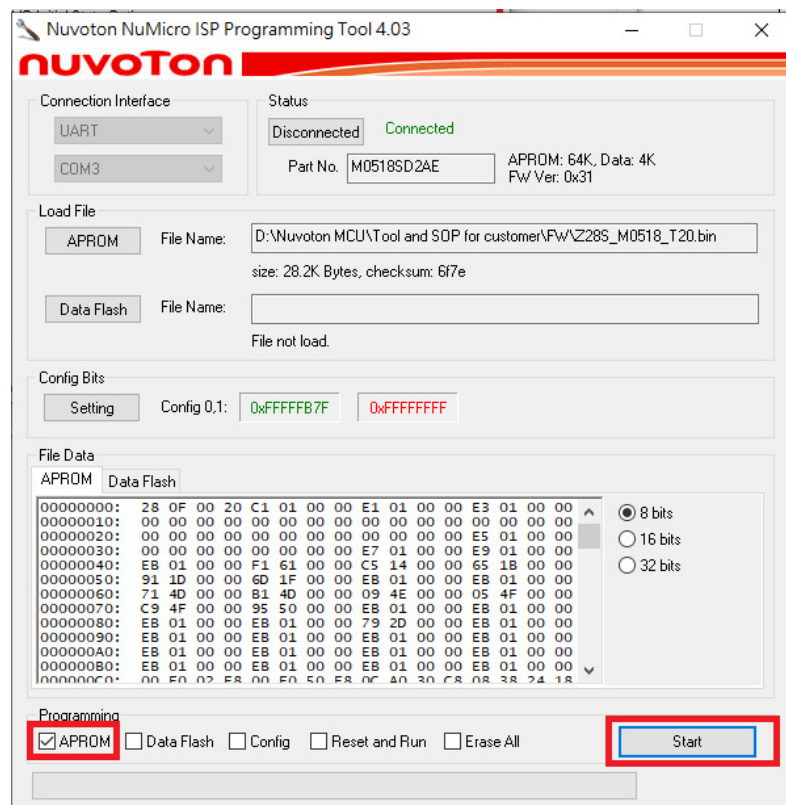
5. Confirm the setting by pressing the “setting” button.



6. Confirm the setting as following.



7. Check the APRPM and then press the “Start” button as below.



8. Wait until download is complete and the power cycle the projector.

